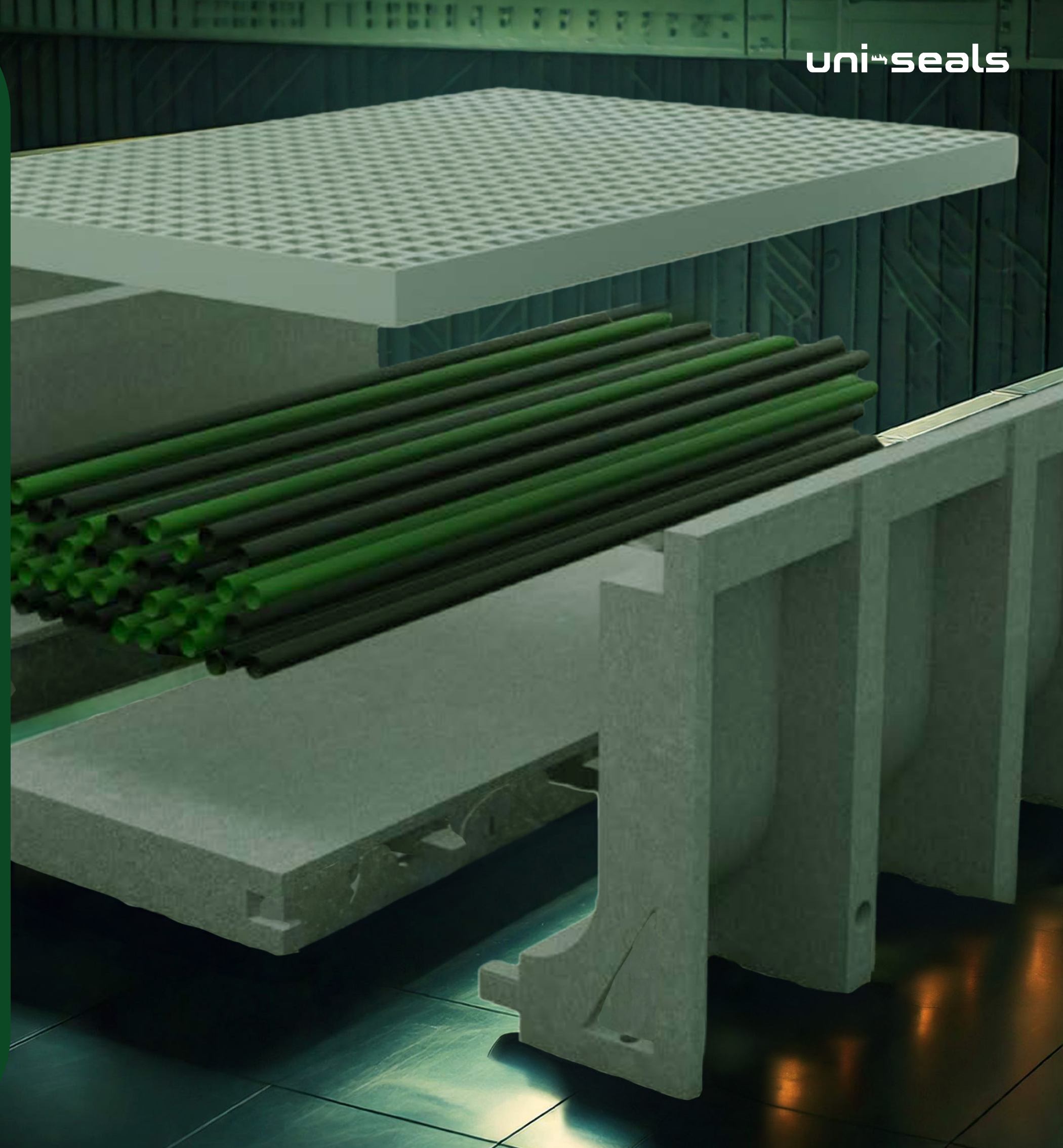
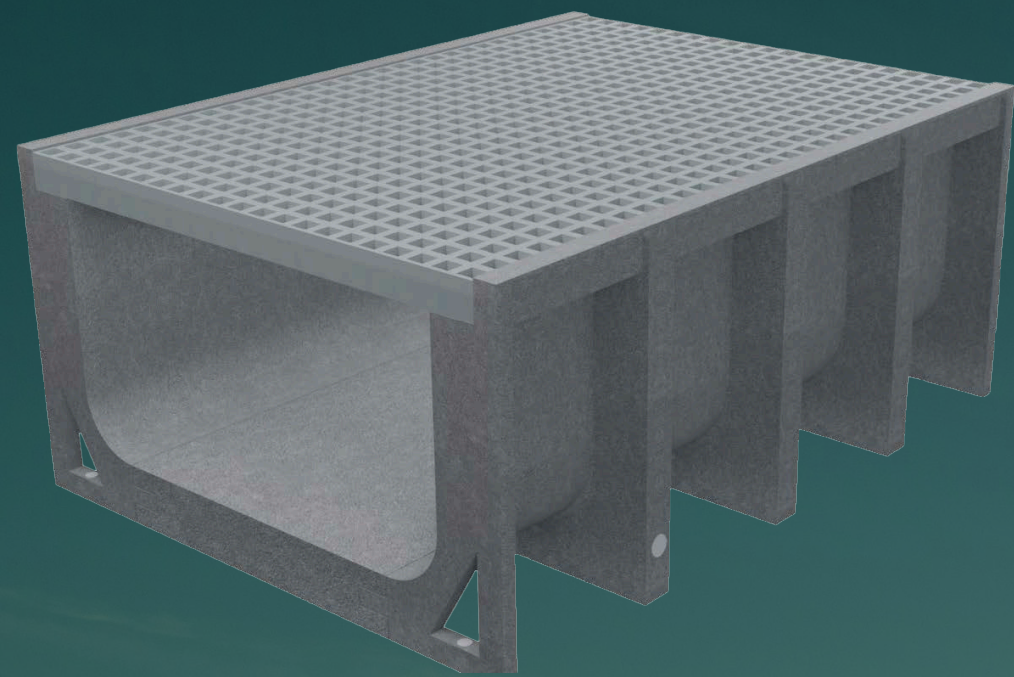


# RUNWAY

The intelligent GRP cable duct





## LIGHTWEIGHT GRP

The green infrastructure material

Runway's lightweight GRP (Glass Reinforced Plastic) ducts represent a breakthrough in material efficiency. Compared to traditional concrete ducts, GRP offers an astonishing weight reduction, making it easier to transport, handle, and install. This not only reduces logistical challenges but also significantly cuts transportation-related CO<sub>2</sub> emissions. GRP is strong yet lightweight, ensuring long-lasting performance without the environmental burden of heavier materials like concrete.

## KEY FEATURES AND BENEFITS

### Versatile Size Options:

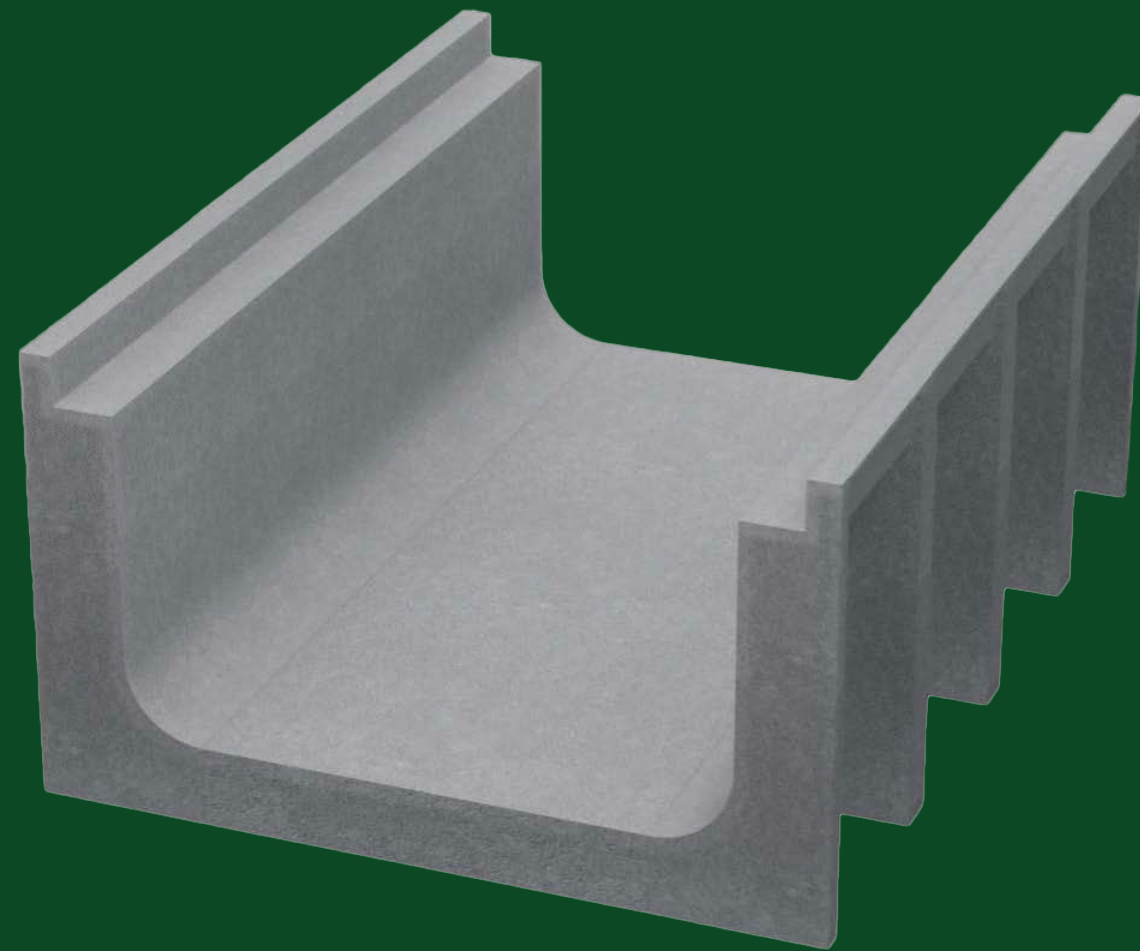
Available in 600mm, 800mm, and 1000mm sizes to fit diverse installation requirements.

### Load Ratings:

Compliant with load classes from A15 to D400, making it suitable for a wide range of applications.

### Lightweight GRP Construction:

Easier to handle and install compared to traditional concrete, reducing labor and transport costs.



### Durable and Long-lasting:

Resistant to corrosion, impact, and chemicals, ensuring long-term protection for cables.

### Environmentally Friendly:

GRP material is recyclable and designed to minimize CO2 emissions and environmental impact.

### Secure Installation:

The integrated ground anchor system ensures a stable and secure installation, even in challenging environments.

## AREAS OF APPLICATION

Runway's GRP cable ducts are ideal for numerous industrial and infrastructure applications, including:



**Power Stations & Power Plants:**  
Protecting cables in heavy-duty energy environments.



**Wind Farms & Biogas Plants:**  
Reliable cable management for renewable energy infrastructure.



**Water Treatment Plants:**  
Providing durable protection for critical systems in wet environments.



**Pharmaceutical and Hospital Facilities:**  
Ensuring safe, organized cable routing for sensitive electrical systems.



**Infrastructure Projects:**  
Airports, railways, and roads, requiring robust, long-lasting cable protection.

## COST EFFICIENCY AND SUSTAINABILITY

Runway offers significant cost savings compared to traditional concrete systems

### **Reduced CO2 Emissions:**

Runway helps reduce environmental impact by minimizing carbon costs, saving double the CO2 emissions compared to concrete alternatives.

### **Lower Transport and Labor Costs:**

The lightweight GRP material reduces transport costs and makes installation quicker and more cost-efficient.

### **Sustainability:**

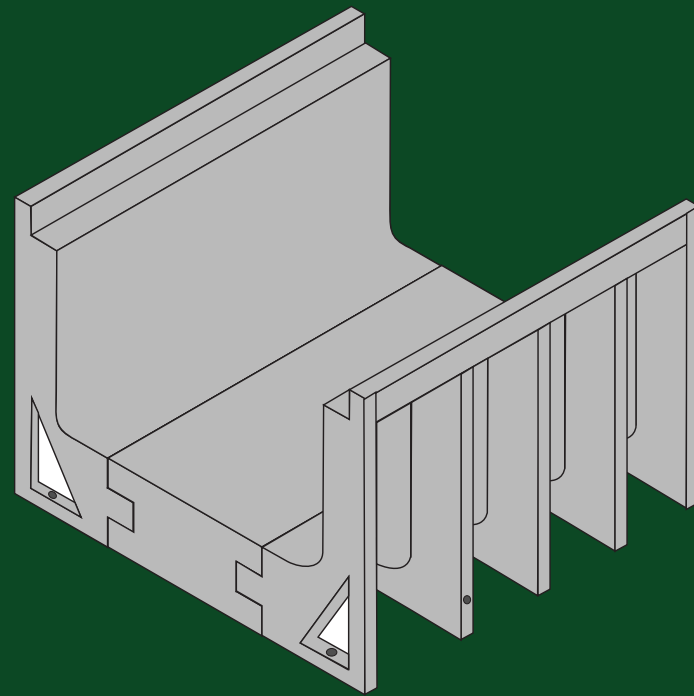
Runway is manufactured with eco-friendly materials that are recyclable, supporting sustainable building practices.



## TAILORED TO YOUR PROJECT: 3 FLEXIBLE SIZES

RUNWAY cable duct systems are designed to meet the needs of diverse applications with three size options, ensuring optimal performance and adaptability for any project.

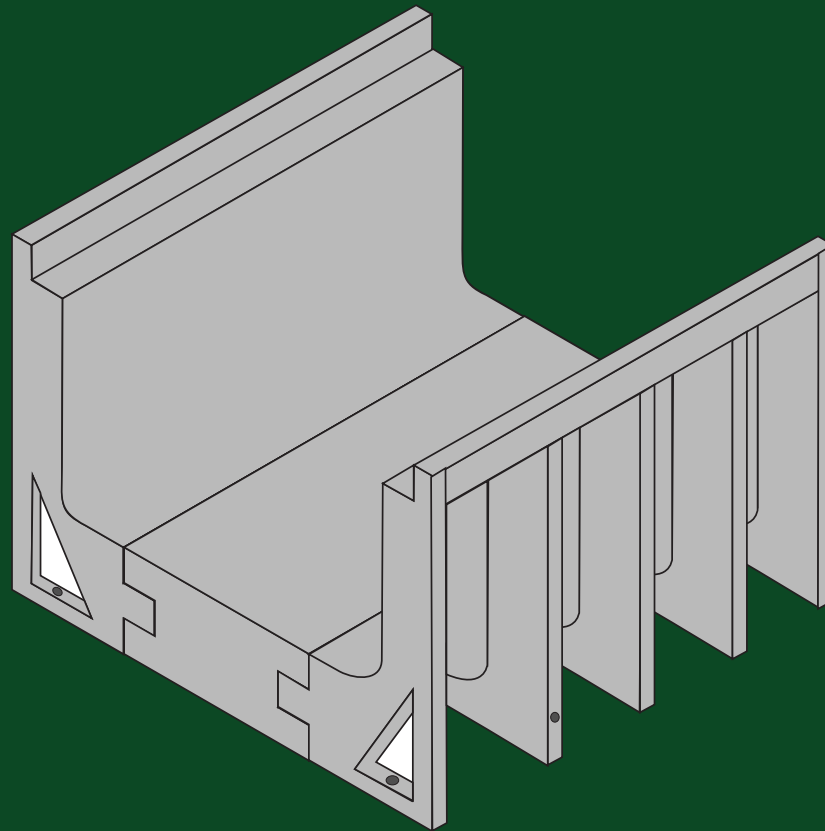
Perfect for compact spaces and smaller installations.



600 x 600 mm

**31 kg**

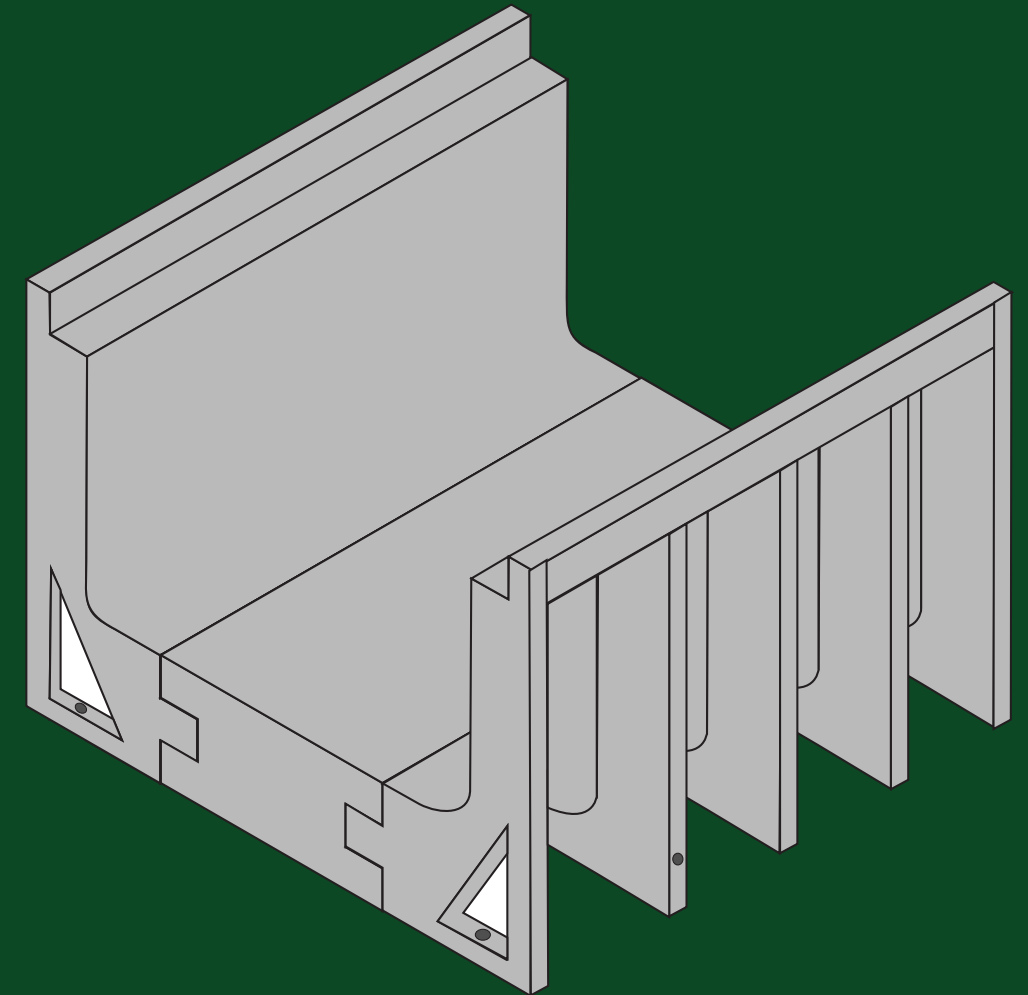
A versatile choice for standard applications.



800 x 800 mm

**55 kg**

Maximum capacity for demanding industrial projects.

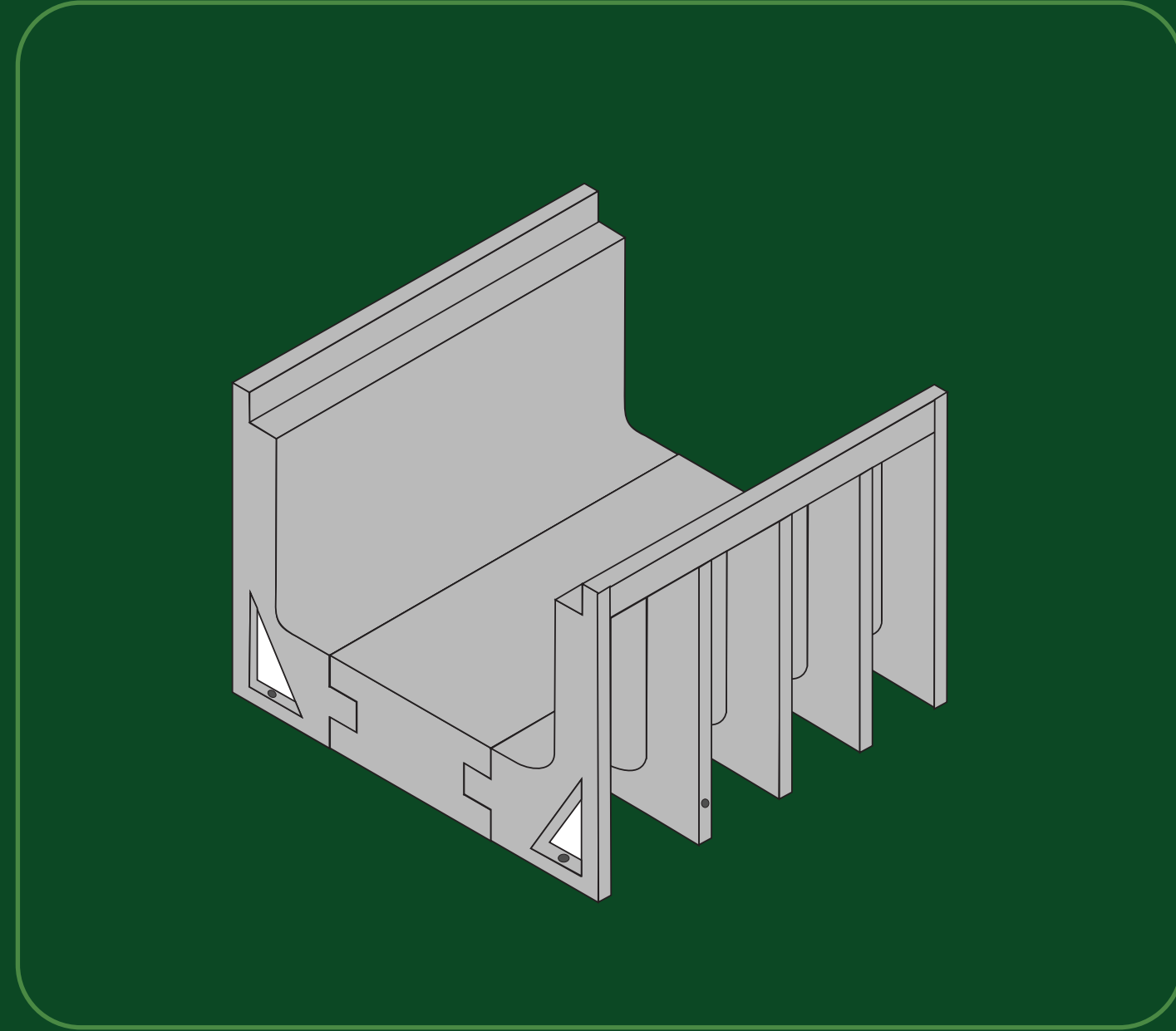
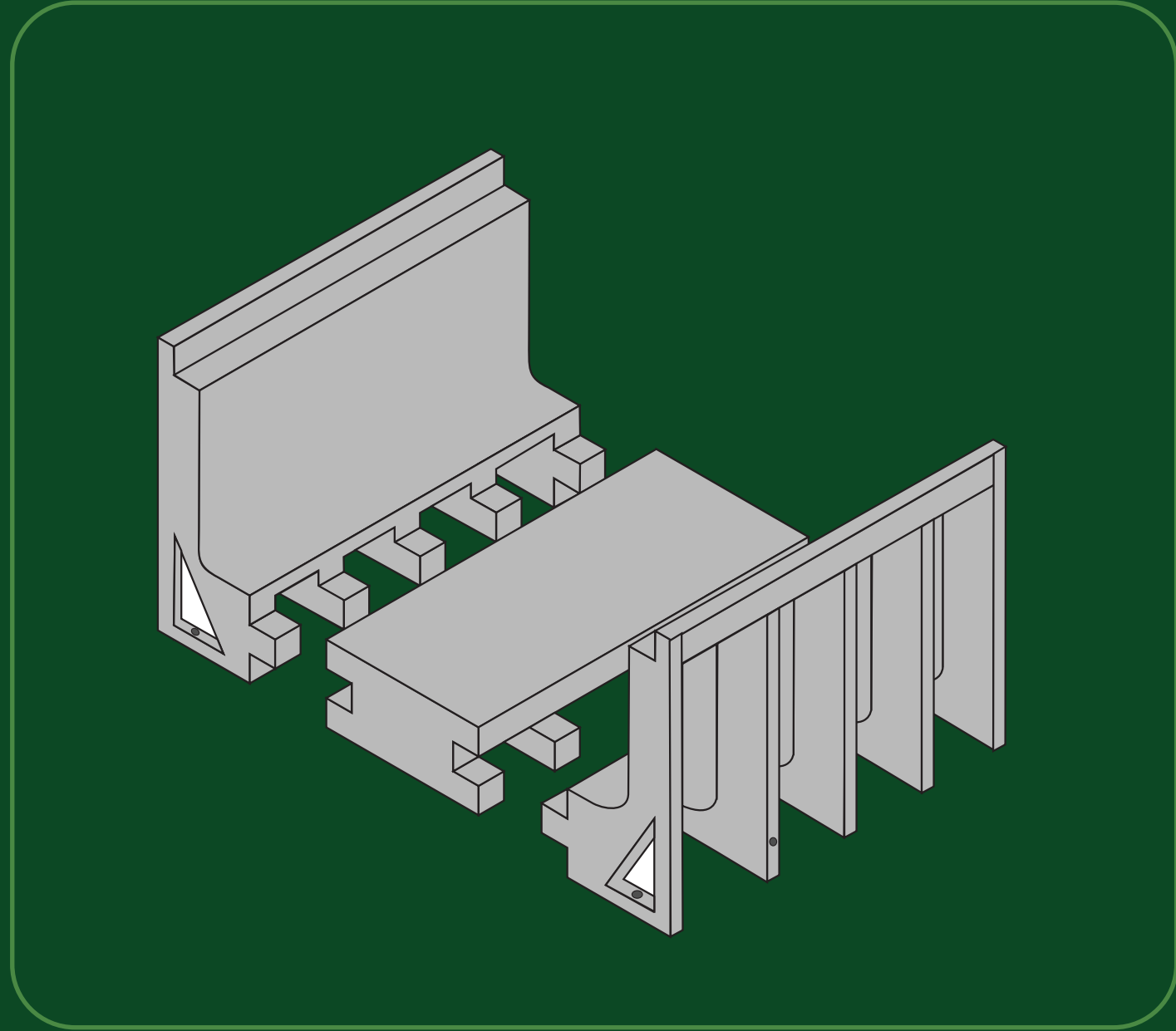


1000 x 1000 mm

**86 kg**

## CO<sub>2</sub> REDUCTIONS

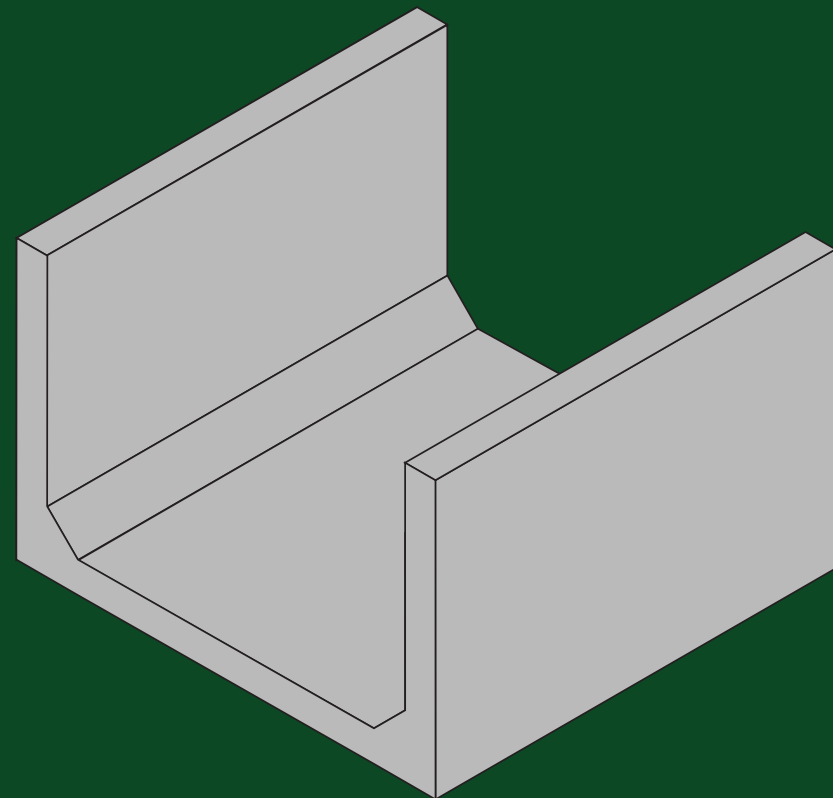
RUNWAY cable duct systems, made from lightweight GRP, cut CO<sub>2</sub> emissions by 95% through reduced weight, efficient transport, and easy installation. Their modular design ensures compact storage and optimized logistics, enhancing sustainability and cost efficiency.



# LIGHTER SOLUTIONS FOR A GREENER FUTURE

95% WEIGHT REDUCTION

Precast concrete duct

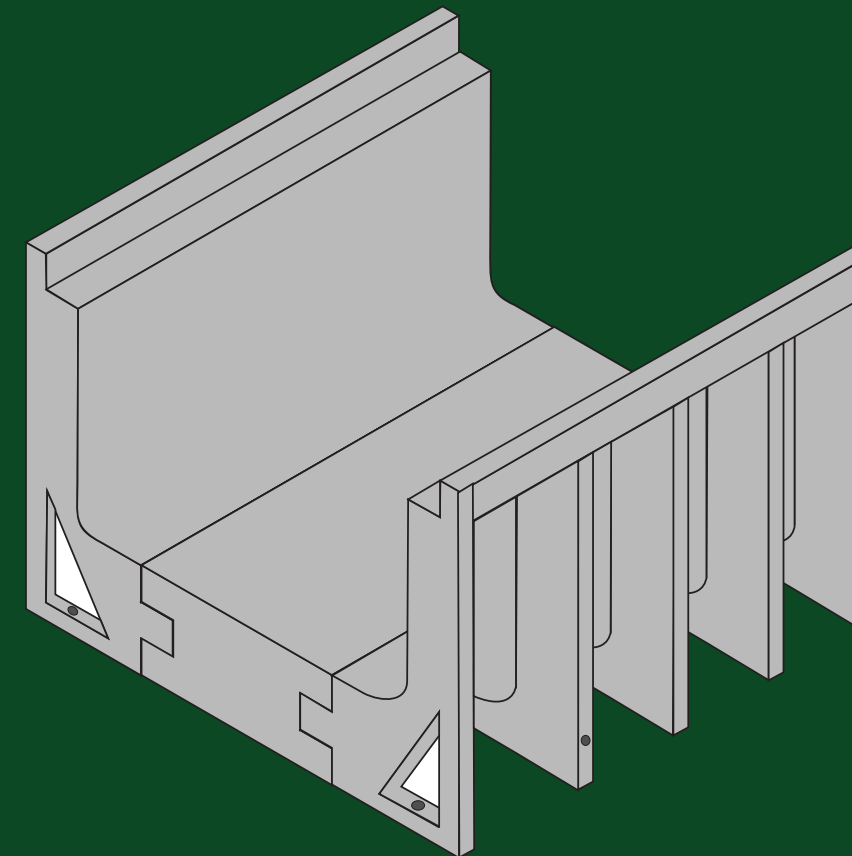


600 x 600 mm

810 kg



Runway GPR duct



600 x 600 mm

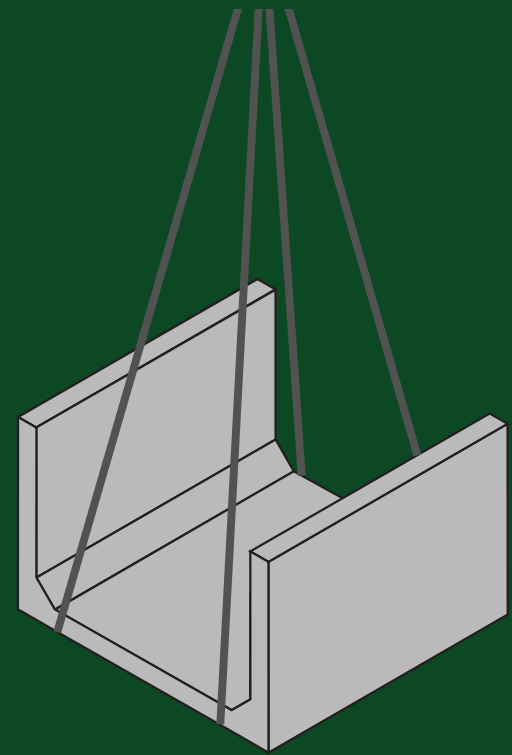
31 kg



# SMARTER INSTALLATION – SAVE RESOURCES AND THE ENVIRONMENT

MORE MANEUVERABLE

Precast concrete duct

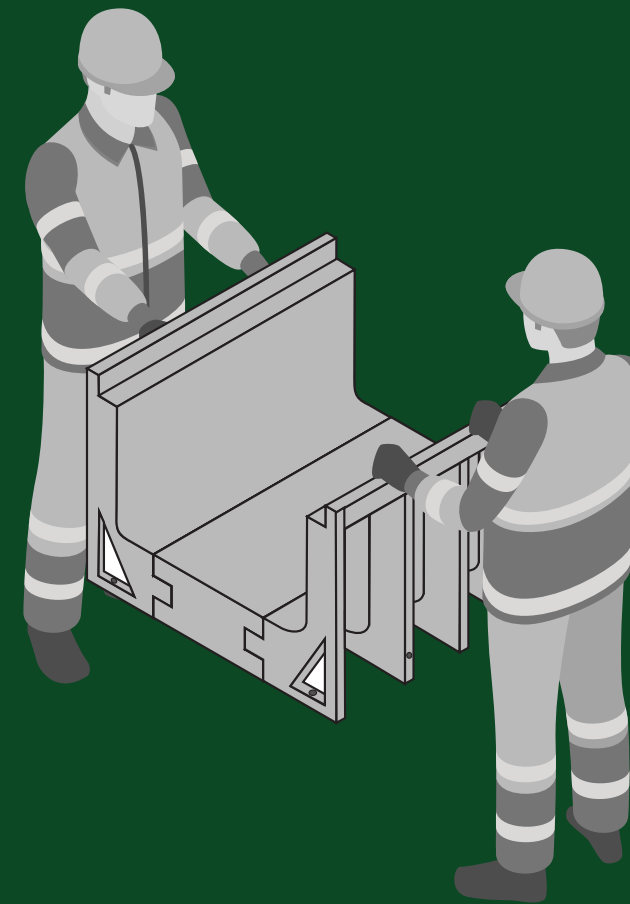


600 x 600 mm

810 kg



Runway GPR duct



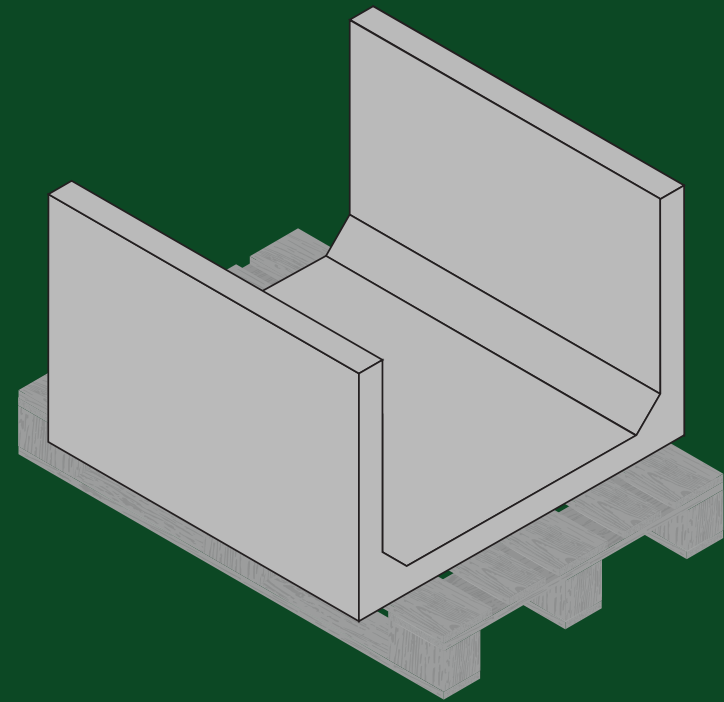
600 x 600 mm

31 kg

# SPACE-EFFICIENT PACKAGING FOR LOWER CARBON IMPACT

*MAXIMIZED PALLET CAPACITY*

Precast concrete duct

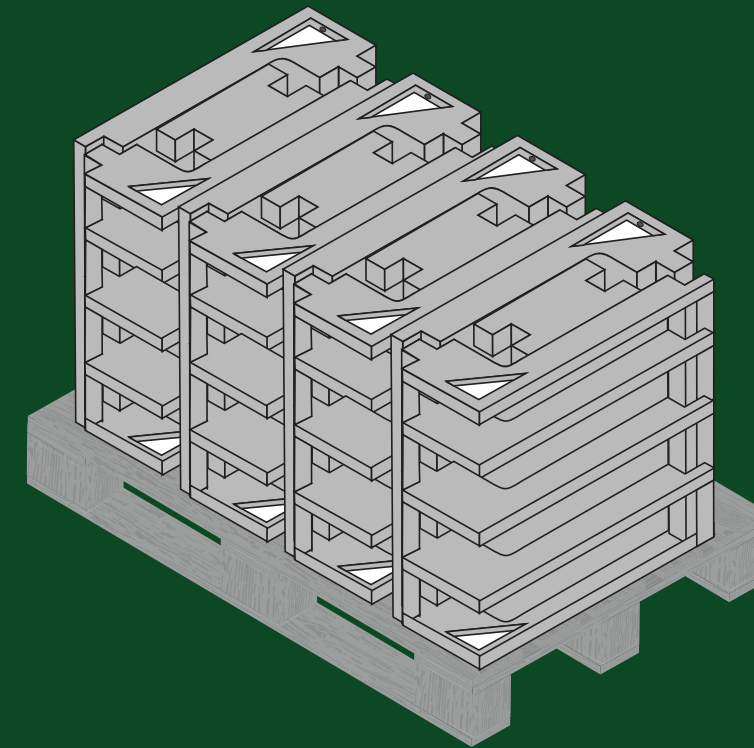


1 unit per pallet

**810 kg**



Runway GPR duct



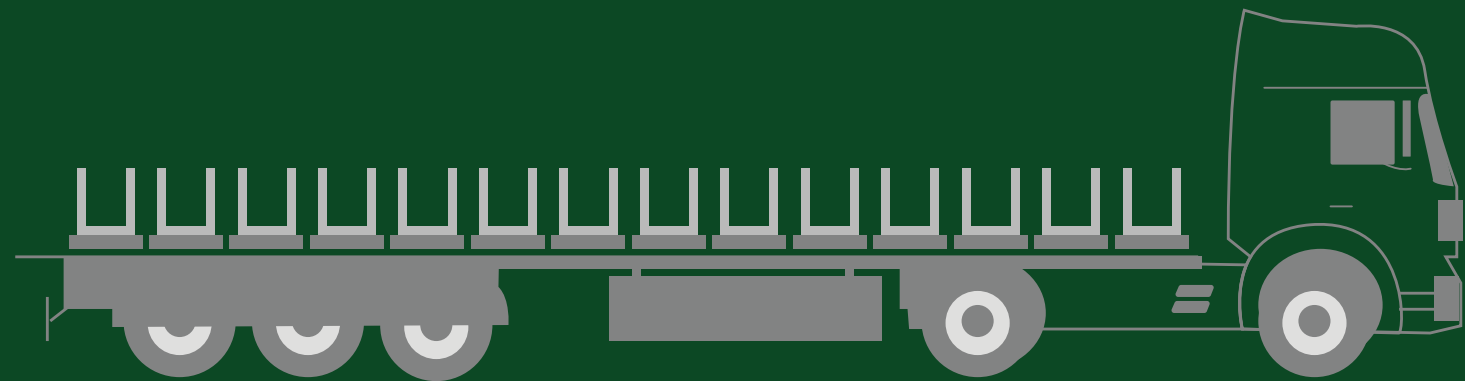
4 units per pallet

**124 kg**

# TRANSPORT THAT SUPPORTS SUSTAINABILITY

*75% REDUCTION IN TRANSPORTATION*

Precast concrete duct

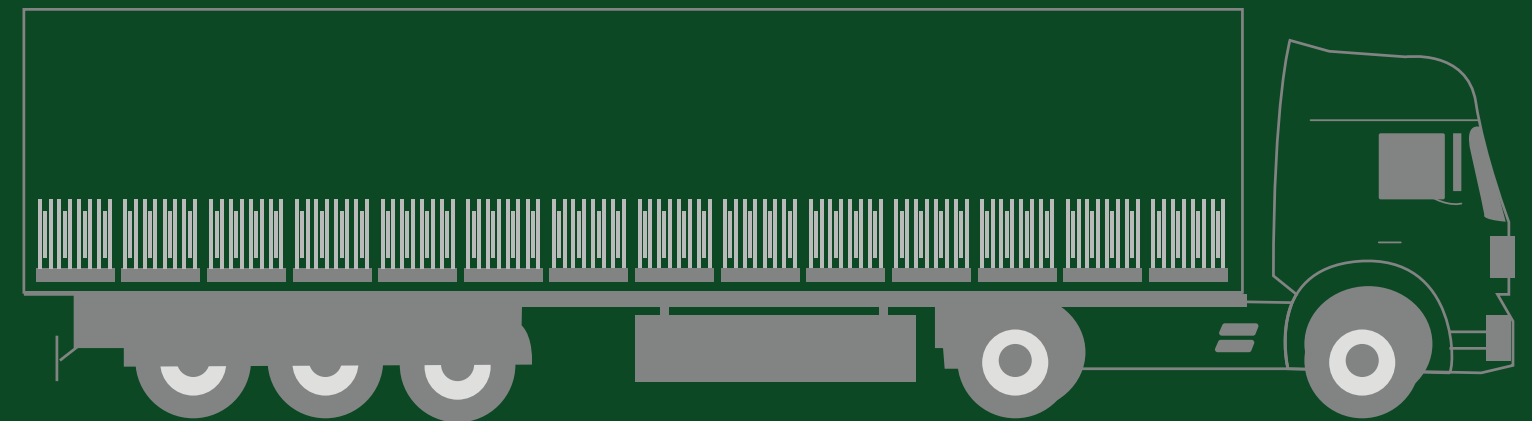


26 units per truck

**3,2 Ton**



Runway GPR duct

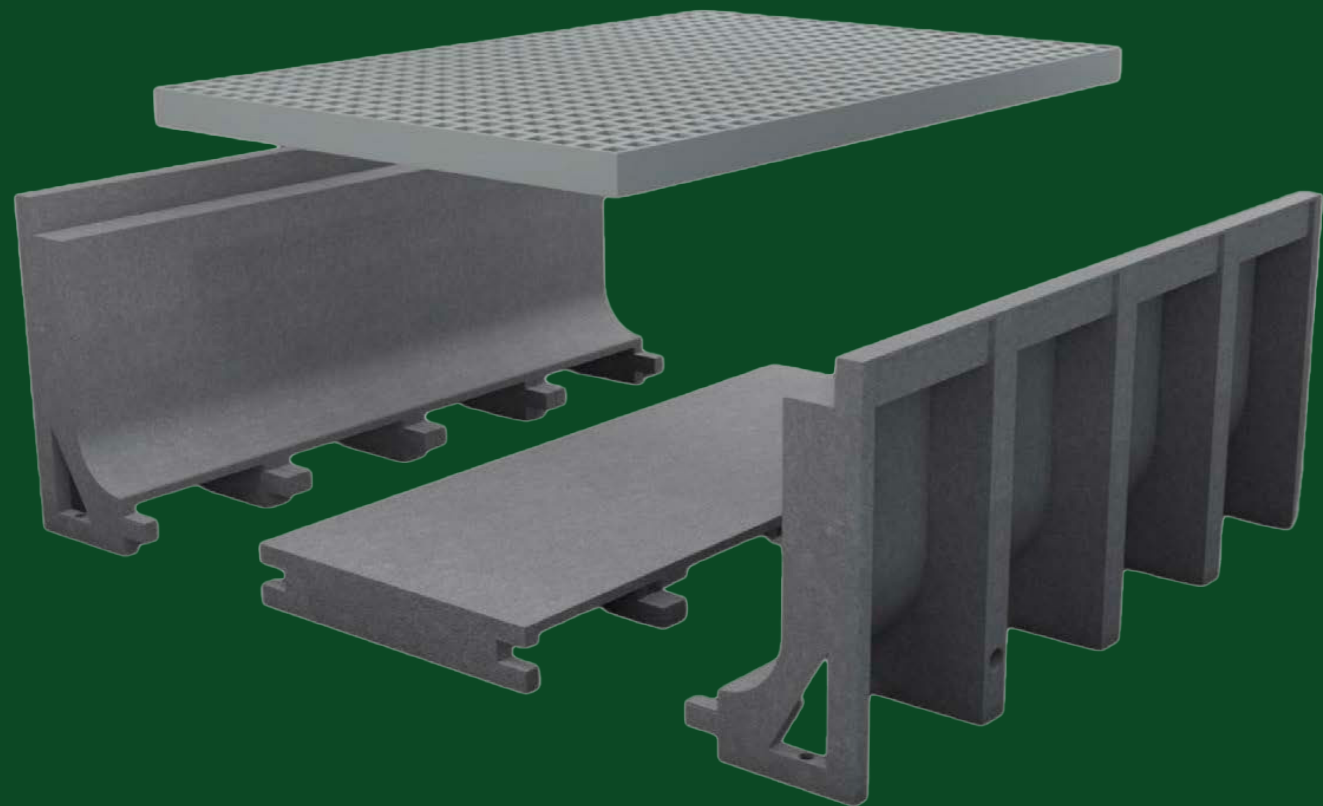


104 units per truck

**21 Ton**

## COMPLIANCE AND STANDARDS

Runway meets the following important standards and certifications, ensuring its quality and reliability



- **ENATS 12/24:** Complies with the UK standard for electrical and cable duct systems.
- **EN1433 and EN124:** Meets European standards for drainage and load-bearing.
- **DGNB Certification:** Supports sustainable building practices and is eco-friendly.
- **Electrical Safety Standards:** Ensures safe, non-conductive protection for electrical cables.
- **Fire Safety Compliance:** Meets fire resistance standards for electrical installations.

## CHEMICAL RESISTANCE AND DURABILITY

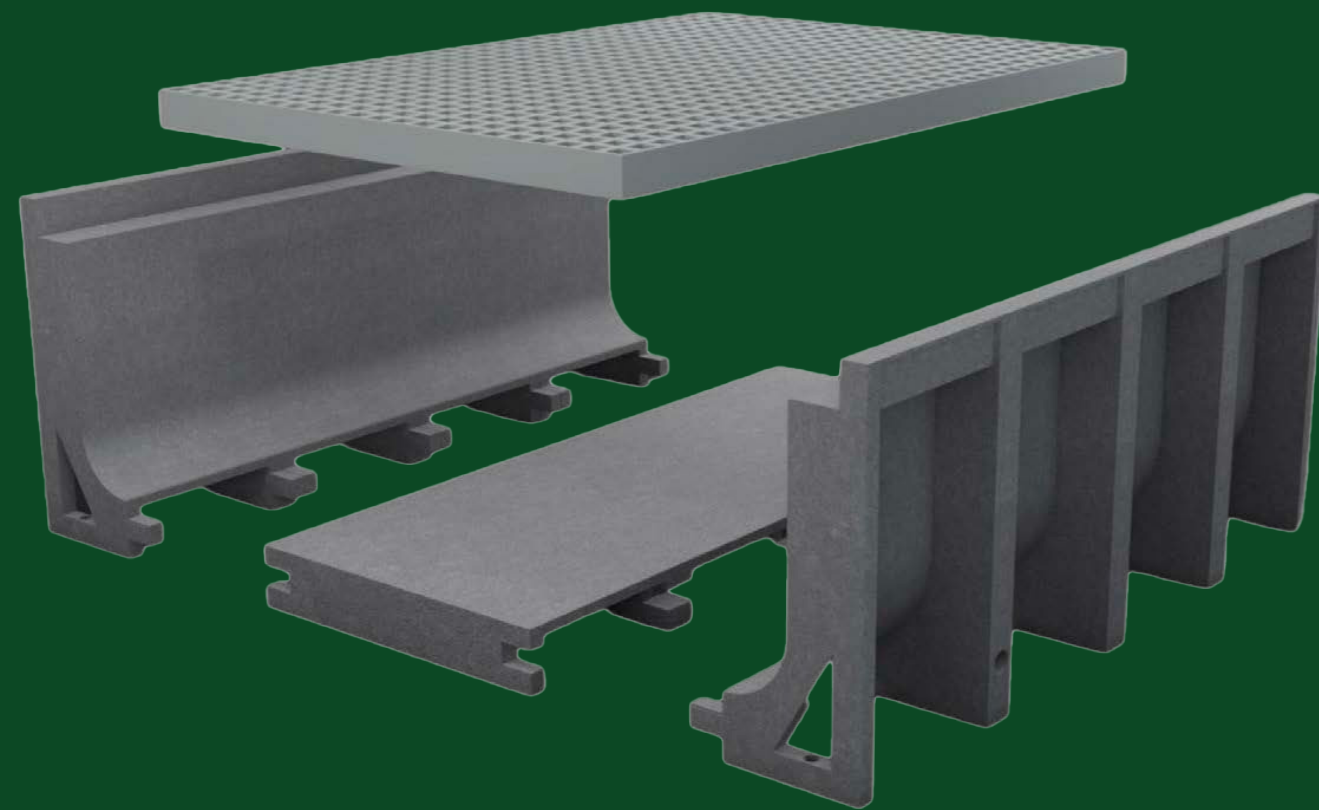
Runway's GRP construction offers excellent resistance to a wide range of chemicals, oils, and environmental stressors. This makes it ideal for use in harsh industrial environments where other materials may degrade or corrode. GRP ensures long-term durability and protection, reducing the need for frequent maintenance.

Runway GRP cable ducts offer exceptional chemical resistance, making them suitable for harsh industrial environments where exposure to chemicals, oils, and other corrosive substances is common.

The GRP material ensures long-term durability, protecting cables against physical and chemical wear under challenging conditions. This high resistance extends the product lifespan, minimizes maintenance needs, and enhances overall reliability for critical infrastructure and industrial applications.



## LOAD CAPACITY AND ELECTRICAL STANDARDS



- ▶ High electrical insulation for safe cable management
- ▶ Non-conductive GRP material to prevent electric shock
- ▶ Compliant with industry standards for electrical safety
- ▶ Suitable for housing both power and communication cables
- ▶ Designed to minimize electromagnetic interference (EMI)
- ▶ Resistant to high voltage exposure and arcing
- ▶ Meets fire safety requirements for electrical installations
- ▶ Reliable performance in indoor and outdoor electrical applications

## WHY YOU SHOULD CHOOSE RUNWAY BY UNI-SEALS

Runway by Uni-Seal is the ideal choice for industrial and infrastructure projects requiring durable, cost-effective, and environmentally friendly cable protection. With its robust GRP construction, compliance with international standards, and range of accessories, Runway provides a comprehensive solution for all your cable management needs.

RUNWAY

uni-seals

## CONTACT US

Skærskovgårdsvej 13,  
8600 Silkeborg

+ 45 70 22 70 18

[ordre@uni-seals.dk](mailto:ordre@uni-seals.dk)

[www.uni-seals.dk](http://www.uni-seals.dk)

uni-seals

